



CS-2050 CS-1650

THE PRODUCTIVITY STARS


Kyocera Technology

CS-2050/1650

| Robust Solutions for Your Business

CS-2050/1650 Highlights

- Fast Output of 20 pages or 16 pages per minute
- Standard Network Print
- Optional Network Scanning and Fax
- Standard 3 way, 650 Sheet (CS-2050) or 2 way, 350 Sheet (CS-1650) Paper Supply
- Optional Document Processor, Duplex, Paper Handling and Finishing
- Monocomponent Technology
- Long Life Consumables



CS-2050 shown with options.

Combining the latest in digital imaging technology with full network capabilities, Copystar's CS-2050 and CS-1650 are redefining the way companies do business.

The CS-2050 and the CS-1650 offer powerful, flexible imaging capabilities, designed specifically to meet the growing needs of small-to-medium sized workgroups and businesses. These systems can handle the demands of everyday printing and copying, expanding the imaging possibilities for any work environment.

Both robust performers, these document imaging solutions offer easy-to-use print, copy, scan and fax features that **increase desktop productivity**. In addition, seamless integration into your existing network and advanced administrative tools provide the ability to **intelligently control** and **manage** your company's document workflow.

Exceptional output, enhanced document control, and low Total Cost of Ownership— it's easy to see why the CS-2050 and CS-1650 are a **smart choice** for your growing business requirements.

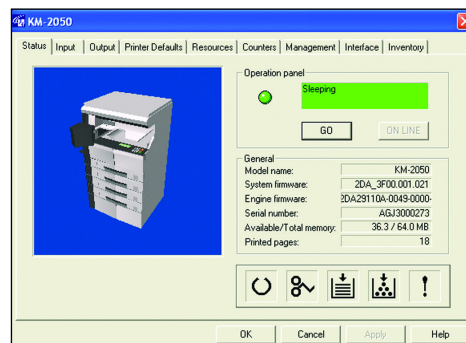
NETWORK/PRINT

Standard Network and Print Capabilities to Enhance Productivity

Print speeds of 20 letter size sheets per minute for the CS-2050 and 16 letter size sheets per minute for the CS-1650 combined with crisp, clean 600 x 600 dpi output to enhance the document imaging capabilities of any network. Both multifunctionals offer a standard **Network Interface** and a standard **Print Controller** that are capable of integrating into virtually any printing environment including PC, MAC, and Linux/Unix. The ability to support most common software protocols and PDL/Emulations brings added versatility.

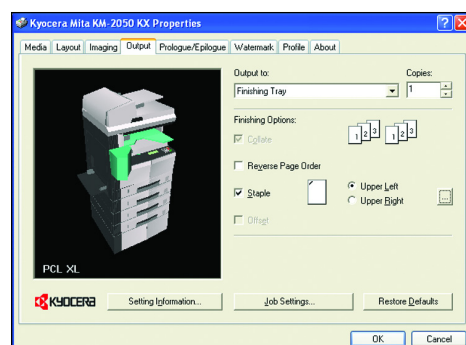
Supporting the CS-2050 and CS-1650 are Kyocera-designed **intelligent device solutions**, enabling users to easily set output criteria, while offering administrators the ability to smartly manage their network – all from the convenience of the desktop. The advanced **KX Driver**, common to all Copystar multifunctionals, ensures consistency, compatibility and integration, regardless of the network system. Users and administrators can effortlessly **customize print settings** and **select output features** from the desktop, enhancing overall document imaging productivity.

The web-based Kyocera Command Center interface facilitates the setting of network parameters and printing by simply entering the assigned IP address. **KM-NET Viewer** and **KM-NET for Client** provide an additional level of support by allowing network administrators to view systems and manage output. For added flexibility, our **PRESCRIBE** solution enables users to create and store forms and letterhead for output as needed, eliminating costly pre-printed materials and the extensive storage space they require.



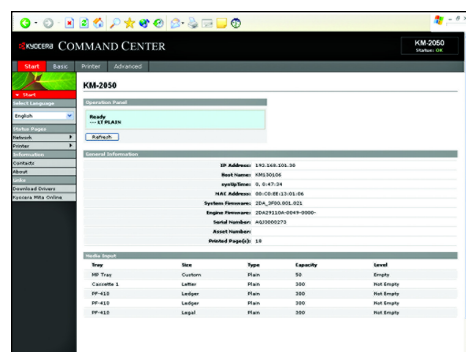
KM-NET Viewer

Network administrators can monitor and maintain all Copystar and other SNMP compliant devices directly from the desktop. Oversee network configuration, check paper levels, change device defaults, as well as set auto reporting, e-mail notification, and alerts.



KX Driver

The user-friendly KX Driver features a common interface, allowing users and administrators complete control of the output process.

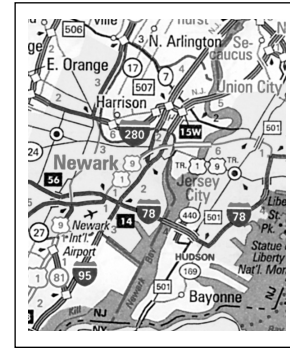


The Kyocera Command Center

Users can easily set network parameters and print specifications by entering assigned IP addresses.

Advanced Scanning Enables Enhanced Document Imaging Abilities

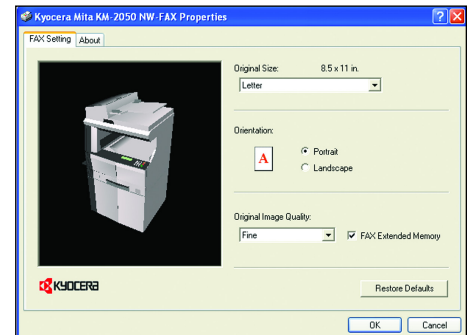
The advanced scanning capabilities of the CS-2050 and CS-1650 bring document flexibility to any business. Users can quickly scan up to 20 sheets per minute, transforming hard copy into TIFFs or PDFs, with resolutions of up to 600 dpi. **Scan to File** abilities enable these images to be electronically archived, eliminating the need for hard copy filing and storage. To boost productivity even further, the **Scan to E-Mail** feature allows users to transmit their business critical documents instantly to any e-mail address.



High Resolution Scanning
Documents can be scanned to E-Mail or File as PDF or TIFF images, at resolutions up to 600 DPI.

Full Fax Capabilities from the Convenience of the Desktop

Equally convenient and economical are the CS-2050 and CS-1650's **Super G3 Facsimile** capabilities. A 33.6 Kbps modem and transmission speeds of 2 seconds per page make both units comparable to most standalone fax machines, while offering the added convenience of **Network Fax**. Users can send and receive messages directly from their PC desktop, eliminating the time and paper required to output a document and then transmit it from a standalone machine, and without compromising desirable fax capabilities such as polling, broadcasting, confidential transmit/receive and address book.



Versatile Network Fax Capabilities
Users can easily send and receive faxes directly from the desktop.

The CS-2050 and CS-1650 offer solutions that deliver all the critical document imaging your business demands. Solid, dependable and capable, they are backed by Copystar, one of the most respected and recognized names in the industry. From simple documents to complex printing applications, they will take your business productivity to new levels.

Digital Technology Offers Superior Copying

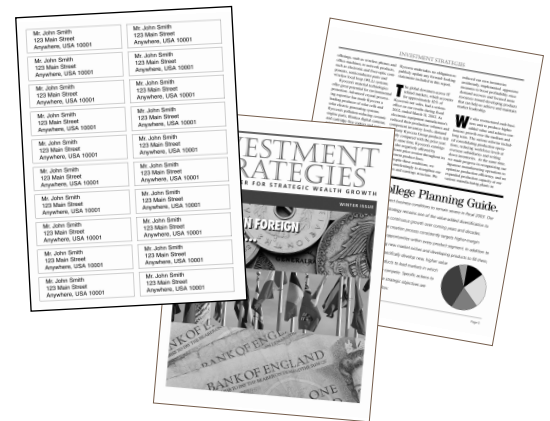
Copystar's reputation for delivering superior copier systems is unsurpassed in the industry. With output volumes of up to 30,000 pages per month, these systems were designed with the needs of a highly productive small- to medium-sized workgroup in mind.

The CS-2050 and CS-1650 are built on a solid foundation of digital technology, with **six standard imaging modes** and standard 64MB RAM, upgradeable to 256MB, making them a solid choice when it comes to copier performance. Features such as **auto magnification**, **border erase** and **margin shift** combine with various photo, text and ECO imaging modes to ensure perfect output every time. The CS-2050 comes equipped with 300 x 2 universal sheet paper drawers (300 x 1 for the CS-1650). Paper tray options expand this capacity to up to 1250 sheets, reducing time spent loading trays. For added versatility, the systems also offer an intelligent Multi-Purpose Tray that can handle assorted media types, sizes, and weights up to 90 lb. index, avoiding the need to outsource production of many types of documents.

Scan Once Print Many technology, electronic sort, and rotate sort save both time and effort, eliminating manual collating. Optional equipment offers even greater paper handling capabilities:

- **50-sheet Reversing Automatic Document Processor** allows users to scan documents quickly and efficiently.
- **Stackless Duplex Unit** allows users to image in both one-sided and two-sided modes.
- **Internal Finisher** can staple up to 30 sheets of letter-sized paper.
- **Job Separator** allows users to keep copy, print, and fax output conveniently segregated.

Both imaging solutions employ our long-life OPC Drum which, combined with our **high yield, monocomponent toner**, ensure a greater number of images with fewer interruptions - an important benefit to a busy office.



Advanced Imaging Capabilities

No matter what your imaging requirements, the CS-2050 and CS-1650 have a range of enhanced features that can accomplish the task.



User-Friendly Control Panel

The CS-2050 and CS-1650 intelligently designed control panel gives you complete control over your document output.



Long-Life Consumables

Kyocera long life consumables go far in reducing Total Cost of Ownership while boosting productivity.

CS-2050/1650 Specifications

BASIC SPECIFICATIONS:

Configuration:	Desktop Digital Multifunctional with Standard 300 x 2 Sheet Paper Drawers (CS-2050) or 300 Sheet Paper Drawer (CS-1650) Plus 50 Sheet Multi-Purpose Tray, 64MB RAM for Scan Once Print Many and Electronic Sort, Standard Printing and Network Interface, Optional Network Scan and Fax, Optional 50 Sheet Document Processor, Duplex and Paper Handling.
Resolution:	600 x 600 DPI/ 256 Levels; Fast 1200 DPI: 2400 x 600 DPI w/KIR Print Resolution
Copier Memory:	Standard 64MB RAM upgradeable to 256MB via 100 Pin DIMMS (1 Slot)
Magnification:	Full Size, Auto Magnification, Plus 50-200% Zoom in 1% Increments
Electrical Requirements:	120V, 60Hz, 9.0A
Dimensions:	CS-2050 (w/o DP) 22.6"W x 23.3"D x 23.9"H CS-2050 (w/ DP) 22.6"W x 23.3"D x 28.6"H CS-1650 (w/o DP) 22.6"W x 23.3"D x 19.8"H CS-1650 (w/ DP) 22.6"W x 23.3"D x 24.5"H
Weight:	CS-2050 - 120 lbs CS-1650 - 105 lbs
Max Monthly Volume:	CS-2050 - 30,000 Pages per Month CS-1650 - 20,000 Pages per Month

OUTPUT SPEEDS:

Warm-Up Time:	Within 20 Seconds
First Copy Out:	5.9 Seconds
First Print Out:	5.5 Seconds
Pages Per Minute:	CS-2050 - 20 Letter, 11 Legal, 10 Ledger CS-1650 - 16 Letter, 8 Legal, 8 Ledger

PAPER SUPPLY:

Standard Paper Sources:	CS-2050 - 300 x 2 Sheet Drawers, 50 Sheet MPT CS-1650 - 300 x 1 Sheet Drawers, 50 Sheet MPT
Drawer Paper Size:	5.5" x 8.5" - 11" x 17"
MPT Paper Size:	5.5" x 8.5" - 11" x 17"
Std / Max Paper Capacity:	CS-2050 - 650/ 1250 CS-1650 - 350/ 1250
Paper Weight:	16-28 lb bond via Paper Drawers, 13 lb Bond -90 lb Index via MPT
Input Materials:	Bond Paper, Recycled Paper, Transparencies, Envelopes

COPY FUNCTIONS:

Imaging Modes:	Auto, Text, Photo, Text / Photo, Manual, EGO
Continuous Copy:	Up to 999, Auto Reset to 1
Additional Features:	Auto Magnification and Paper Select, Scan Once Print Many, Electronic Sort, Rotate Sort, 2 in 1, 4 in 1, Border Erase, Margin Shift, EGO Mode, 100 Management Codes

PAPER HANDLING OPTIONS:

DOCUMENT PROCESSOR: DP-410

Type:	Reversing Automatic Document Feeder
Acceptable Originals:	5.5" x 8.5" - 11" x 17"
Capacity:	50 Sheet RADF
Speed:	CS-2050 - 20 Originals per Minute CS-1650 - 16 Originals per Minute
Paper Weight:	13 lb Bond - 90 lb Index
Dimensions/Weight:	21.7"W x 19.0"D x 4.7"H / 13.2 lbs.

DUPLEX: DU-410

Type:	Stackless
Paper Size:	5.5" x 8.5" - 11" x 17"
Paper Weight:	16 - 20 lb Bond
Duplex Modes:	1:2; 2:2; 2:1; Book: 2/1

PAPER DRAWERS: PF-410

Paper Capacity:	300 Sheets
Paper Weight:	16 - 28 lb Bond
Paper Size:	5.5" x 8.5" - 11" x 17"
Dimensions / Weight:	22.5"W x 21.2"D x 5.32"H / 15.4 lbs

INTERNAL FINISHER: DF-410

Stack Capacity:	500 Sheets
Paper Size:	5.5" x 8.5" - 11" x 17"
Paper Weight:	16 - 28 lb Bond
Staple Capacity:	30 Sheets: 8.5" x 11"; 20 Sheets: 8.5" x 14", 11" x 17"
Dimensions / Weight:	12.2"W x 16.0"D x 6.3"H / 19.8 lbs

ADDITIONAL OPTIONS:

Job Separator, Platen Cover, Copy Stand, 32MB Fax Memory, 16, 32, 64, 128MB DIMM for Copier, 32, 64, 128, 256MB DIMM for Printer

CONNECTIVITY:

STANDARD PRINT:	
Controller:	Embedded PowerPC750/ 300 MHz Controller
Printer Memory:	Standard 64MB, Upgradeable to 320MB via 100 Pin DIMMS, Optional MicroDrive, Standard CF Card Slot (Type 1)
Supported PDL/Emulations:	PRESCRIBE, PCL6 (PCL XL, PCL 5e), KPDL3 (PS3), KGL (HP-GL/2), Diablo 630, IBM ProPrinter X24, Epson LQ850, Line Printer
Fonts:	80 Outline Fonts for PGL XL/5e, 136 Outline Fonts for KPDL3, 17 Bitmap Fonts
Windows® OS Compatibility:	Windows® 95/98/Me/NT4.x/2000/XP/2003
Novell® OS Compatibility:	Novell NetWare® 3.x/4.x/5.x/6.x
Mac OS Compatibility:	OS 8.x/9.x/10.x
UNIX OS Compatibility:	Sun OS 4.1.x; Solaris 2.x; AIX, HP-UX (LPR)
Connectivity / Interface:	Standard 10/100BaseTX, Parallel IEEE1284, High Speed USB 2.0
KU10 LV Expansion Slots (1)	Optional 1B-22 Enhanced Wireless NIC
Supported Protocols:	TCP/IP, IPX/SPX, AppleTalk, NetBEUI
Driver:	KX Driver for Windows®, PPD for Mac, PPD for Linux/UNIX, Certified UniDriver, Windows® 64-Bit Drivers
Utilities:	KM-NET Viewer, KM-NET for Client, PDF Direct Print, KX SpoolCenter, KM-NET Printer Disk Manager, Kyocera Command Center, PRESCRIBE Utilities

OPTIONAL SCAN: SCAN SYSTEM (F)

Resolution:	200, 300, 400, 600 DPI
Scan Speed:	CS-2050 Up to 20 Sheets Per Minute CS-1650 Up to 16 Sheets Per Minute
File Formats:	PDF, TIFF
Connectivity:	NS-30 10/100BaseTX
Supported Protocols:	TCP/IP
Scanning Features:	Scan to PC/File, Scan to Mac, Scan to E-Mail, TWAIN
Driver:	TWAIN Driver/TWAIN Driver for Mac
Utilities:	KM Scanner File Utility, Scan to Mac Utility, KM Scanner Address Book, Address Book Editor, Advanced Network Set-up Utilities

OPTIONAL FAX/NETWORK FAX: FAX SYSTEM (L)

Compatibility:	Super G3
Transmission Speed:	Approximately 2 Seconds per Page
Modem Speed:	33.6 Kbps w/ Auto Fallback
Data Compression:	JBIG, MMR, MR, MH
Fax Memory:	Std 8MB/ Max 40MB
Driver:	KM Network Fax Driver
Utilities:	Address Book for NW Fax, Address Editor for Fax
Additional Features:	Duplex TX/RX, Confidential TX/RX, Polling, Broadcasting, 2 in 1 RX



Specifications and design are subject to change without notice.
For the latest on connectivity visit www.copystar.com.
All trademarks and registered trademarks are the property of their respective manufacturers.

Kyocera Mita America, Inc. Headquarters:
225 Sand Road, PO Box 40008, Fairfield, NJ 07004-0008, USA
© 2006 Kyocera Mita America, Inc.
Item Code# 87164235



www.copystar.com