



**CS-5035**  
**CS-4035**  
**CS-3035**

*The Productivity Stars*

# CS-5035 / 4035 / 3035

Your Serious Productivity Partners

## CS-5035/4035/3035 Highlights

- Fast Output Speeds of 50, 40, or 30 pages per minute
- Optional Network Printing, Scanning, and Fax
- Standard 64MB RAM
- Optional 20GB Multipurpose HDD for Document Management
- Standard 3-way, 1,200 Sheet Paper Supply and Duplex
- Advanced Finishing and Paper Handling Options
- Powerful Imaging Features and Capabilities, designed to increase productivity and streamline workflow

With workgroup solutions that work overtime, you can take total control of all your critical document tasks.

Copystar introduces a new generation of networked, **multi-function** document devices that are rapidly redefining workgroup productivity and efficiency. Engineered for the serious demands of corporate environments, the CS-5035, CS-4035, and CS-3035



Document Imaging Solutions build on Copystar's reputation for delivering unsurpassed quality, performance, and reliability.

Incorporating many of Copystar's innovative advances—including a universal **KX Driver** for printing, as well as seamless network integration—the versatile **print, copy, scan** and **fax** features are also simple to use, making workgroup collaboration convenient and effortless. This ease of functionality dramatically reduces the burden on network administrators and IT staff, while increasing the ability of all users to better manage and control document flow.

With the CS-5035, CS-4035, and CS-3035, Copystar pays close attention to your bottom line, too. Designed to economically manage the output demands of fast-paced workgroups, these **cost-effective** document solutions can mean significant savings for your organization over time, through conserved resources, reduced maintenance, and increased workflow efficiency.

So whether your documents are paper-based or electronic—whether you're generating financial reports, educational materials, sales guides, or other high-impact communications critical to your business—Copystar has a workhorse to handle your workload. Put higher productivity and performance in the hands of your workgroup with a **comprehensive** solution from Copystar.



# NETWORK

## Maximize management capabilities for your enterprise with outstanding network connectivity.

The CS-5035, CS-4035, and CS-3035 connect easily to virtually any network via wired or wireless options. Once connected, they're transformed into versatile multi-function devices that give any enterprise complete **control** over its documents.

Copystar's **Advanced Network Setup Utilities** ensure that initial setup and configuration of our document devices can be handled with unparalleled ease. Using these advanced tools, Network Administrators can set protocols, printing defaults, and preferences, enable notification services, and apply security—simply by entering an IP address in any browser interface. Minimal time is required for configuration, so Administrators are free to concentrate on other tasks. And because they're controlled through a Web interface, the CS-5035, CS-4035, and CS-3035 can be managed from any desktop.

The instant you're connected, **KM-NET Viewer** takes over. This Administrative Utility—provided at no charge—allows Network Administrators to monitor all SNMP compliant printing devices on the network. With KM-NET Viewer, Administrators can oversee the network configuration, check paper levels, change device defaults, and view meter counts. The ability to set auto reporting, e-mail notifications and alerts also allows Administrators to address any issues or problems in real-time.

Of course, **wireless** networking is the new frontier in office automation and our company is at the forefront of the wireless world with our IB-22 Enhanced Wireless Network Interface. We were one of the first to introduce an embedded, WiFi certified wireless solution for all our devices—expanding boundaries while adding **flexibility** and mobility to any network.



### ADVANCED NETWORK SETUP

The Advanced Network Setup Utility can be accessed from any Web Browser. Setup and configuration are accomplished from the desktop, providing a quick, easy way for Administrators to complete this task. The Utility allows Administrators to set multiple network protocols, device defaults, security, and advanced notification for either wired or wireless networking.



### MANAGE DEVICES

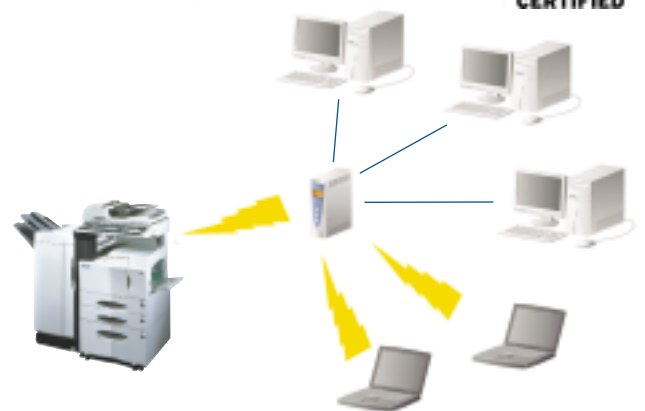
KM-NET Viewer allows Administrators to monitor and maintain all Copystar and other SNMP Compliant devices from the desktop. This Utility is easy to navigate, and provides valuable feedback, in real-time, so issues can be addressed promptly.



Once running, KM-NET Viewer can attain in-depth information from Copystar Devices. Status, meter counts, and paper levels can be viewed, and automatic reports can be generated. Error notification, via pop-up or e-mail, can also be configured.

### WIRELESS NETWORKING

Copystar was one of the first to introduce an embedded Wireless Solution for all our printers and multi-function devices. It is WiFi certified by WECA for security, featuring 64 and 128 bit encryption.



# PRINT

## One easy-to-use, universal print driver empowers greater productivity in every user.

Our products have been designed to ensure maximum efficiency, **simplicity**, and productivity for both Administrator and end-user. Our sophisticated KX Driver is one result. A major advance in ensuring device consistency, compatibility, and integration, the **KX Driver** is common to all Copystar products regardless of connected device, Page Description Language, or Windows™ operating system.

The KX Driver gives you full access to and control over all paper resources, publishing features and advanced finishing capabilities. With the KX Driver you can **create** outstanding documents—complete with covers and inserts, and finished with staples or hole-punch—saving you time and reducing costly outsourcing expenses.

**PRESCRIBE**, the native command language of our devices, provides the ability to master complex printing challenges on the CS-5035, CS-4035, and CS-3035. Whether your company is interested in reducing the expense of pre-printed forms, or migrating from older line-printers, PRESCRIBE can solve unique applications for specific business needs.

For added versatility, our **PDF Direct Print Utility** significantly enhances your ability to generate impressive documents. Designed to print Portable Document Format (PDF) files outside the application, PDF Direct Print takes advantage of all key product features, such as paper handling, finishing, duplex, and even Job Storage. For the workgroup that demands productivity, PDF Direct Print delivers.



### UNIVERSAL PRINT DRIVER

Our unique KX Driver is designed with a common user interface—regardless of device, Windows OS, or PDL. You'll have total control over every feature of the CS-5035, CS-4035, and CS-3035, including paper, publishing, finishing, and document storage.

### PROFILES

Workgroup clients can save Print Job settings for frequently required finishing and paper handling features. Documents can be printed productively, without a need to worry about output.

### KX DRIVER SETTINGS

From properties, Administrators and end-users can choose from many options. Whether users prefer to print using PCL or Postscript language, or the enterprise requires Account Management for tracking, the universal KX Driver has the capabilities.

### PRESCRIBE

Print directly on forms and letterhead stored on the device, eliminating the need for costly pre-printed materials. Print commands are contained in the Prologue/Epilogue tab on the KX Driver for easy access.

### PRINT ON DEMAND

With the optional eMPS Printer HDD, the KX Driver has the expanded capability to print and store documents with barcodes, create Virtual Mailboxes, and ensure secure printing. Truly versatile, the e-MPS HDD is an essential tool for workgroups.

### MULTI-PLATFORM SUPPORT

Whether your enterprise prints from Windows, Mac, Linux or UNIX, the CS-5035, CS-4035, and CS-3035 can do the job. Postscript (KPL3) is included with the Print Option, so users can utilize our Desktop Print Utility from Mac, or print to Linux or UNIX from CUPS or PDQ.

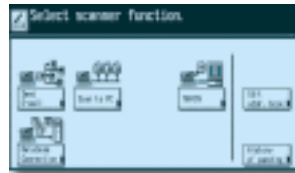
# SCAN / FAX

## Unprecedented document sharing and delivery capabilities mean improved communications across your enterprise.

Included with our print system, our advanced **Scanning Suite** offers the most comprehensive solution available, allowing you to deliver, share and retrieve paper based documents easily in electronic formats. Documents can be scanned as either PDF or TIFF, up to 600 dpi, simplex or duplex. For integration with desktop applications, our Scanning System is also TWAIN-compliant.

For enhanced document management within your enterprise, we offer the **KM Document Flow System**. Access network folders and subfolders from the Touch Screen, and efficiently archive paper-based documents at a network destination. Once the destination is selected, you can index files on many levels, including File Name, Subject, Keywords, and Creator Name. Search and retrieval can also be accomplished from the desktop using the software package that's bundled with the Scanning Suite. **Scan-to-E-mail** allows documents to be sent directly from the device, either manually from the Touch Screen Interface or the integrated Address Books. For more demanding enterprises, our **LDAP Converter** (Lightweight Directory Access Protocol) allows users to search a Corporate E-mail Database of over 65,000 addresses. **Scan-to-File** enables users to send documents directly to their PC or MAC as PDF or TIFF, and into various applications for Optical Character Recognition (OCR) or editing.

Convenient and economical, **Network Fax** supplements your workgroup's stand-alone facsimile capabilities with Super G3/33.6 kbps high-speed delivery of documents. Send/receive faxes at your desktop, direct incoming faxes to specific PC folders, store frequently used destinations, attach cover sheets, add messages, and more.



### SCAN VERSATILITY

Our Scanning solution includes diverse functionality to satisfy any enterprise. Whether your business applications require Document Management, Scan-to-File, Scan-to-E-mail, or TWAIN scanning, our standard Scanning System can deliver.



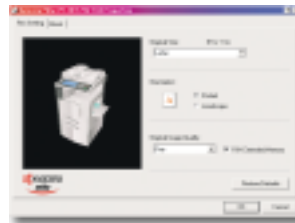
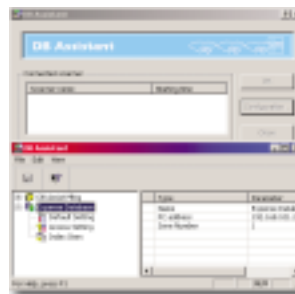
### ONE TOUCH SIMPLICITY

Copystar's Scanner System is accessed directly from the wide Touch Screen Interface for document delivery. Once the proper destination is chosen, scanned documents can be delivered intact. Documents can be scanned from the platen or Document Processor, in simplex or duplex, as TIFF or PDF, at resolutions up to 600 dpi.



### SCANNED IMAGE MANAGEMENT

The DB Assistant Utility, part of KM Document Flow, offers the ability to scan directly to folders and subfolders on the network from the Touch Screen Interface. Documents can be indexed using Keywords, File Name, Subject or Creator Name. These new electronic documents can be searched using software supplied with our Scanning System.



### FAX/NETWORK FAX

The addition of fax opens up exciting possibilities for the Workgroup. Now, deliver faxes to any location from the control panel or the desktop. Faxes received can be printed or sent to folders on the network. Combined with the Print/Scan System, our Network Fax offers serious business solutions.



# COPY

## Manage your workgroup's output demands with the highest level of functionality and versatility.

At the heart of any powerful imaging solution is **reliable** copy functionality, and our reputation for delivering superior copier systems is unsurpassed. The CS-5035, CS-4035, and CS-3035 incorporate the best technology has to offer, providing exceptional productivity, reliability, and image quality.

Built with the workgroup in mind, these document solutions have the ability to generate 85,000–150,000 pages per month, and come standard with a 3-way **duplex** and a 1,200-sheet paper supply. There's an optional 100-sheet Document Processor, and you can choose to maximize your paper supply with 1000 or 3000 sheet paper decks.

For an even higher level of document management, Copystar offers an optional 20GB Hard Disk Drive. This allows workgroups to take advantage of features like **Synergy Print Box**, enhancing a user's ability to share documents and collaborate on projects by combining individually stored files to create new documents. The **Shared Data Box** can be used to store any document that is routinely needed in an office, like expense forms or fax cover sheets. And the **Forms Gallery** allows static forms to be stored and named, ready for output any time, using the Forms Overlay feature. You can professionally finish documents, too, with a wide range of options to meet your workgroup's finishing needs, including Edge or Book Staple, multiple Hole-Punch, and more.

All three devices employ our exclusive, long-life **Amorphous Silicon Drum** technology—combined with our high yield toner capacity, this assures dramatically more images and fewer interruptions.



### SIMPLE TOUCH SCREEN INTERFACE

The CS-5035, CS-4035, and CS-3035's intelligently designed control panel offers a wide Touch Screen Interface for error-free feature selections and ease-of-use. The Touch Keys, Text Messages, Graphics, and Shortcut Keys—in combination with a User Choice Screen—assure that frequently used features can be deployed instantly.



### MULTI-PURPOSE HARD DRIVE

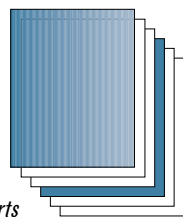
With the optional, multipurpose 20GB Hard Disk Drive, you can archive up to 70,000 pages and store critical information like frequently used forms, manuals or corporate directories for instant reprinting.



*Hole-Punch & Edge Staple*

### FINISH THE DOCUMENT

The optional finishing enhancements add a complete, professional look to your documents. Pages can be finished with Edge or Book Staples, while Two and Three Hole-Punch are available for binder presentations.



*Covers / Inserts*

Covers and inserts can be added, giving extra impact to your documents. Create superior output, all from the Touch Screen Interface.



*Saddle-Stitch*

Produce letter and ledger signature style booklets with auto V-fold and saddle stitch. These advanced finishing features make outstanding Desktop Publishing simple.

# SOLUTIONS

## Superior performance when the pressure's on— because in today's business environment, the pressure is always on.

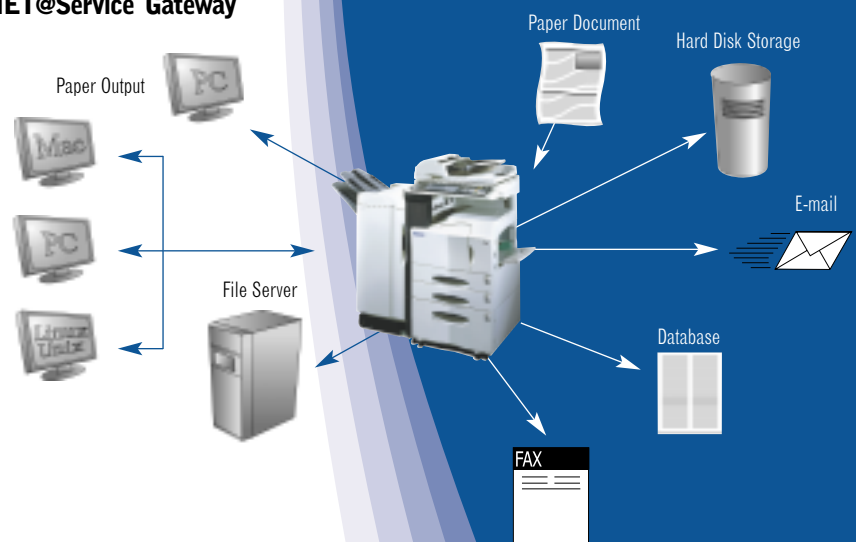
With so much to do every day, you need more to do it with—and Copystar has the feature-rich, **cost-effective** document devices to get the job done. Whether you select the CS-5035, CS-4035, and CS-3035, you'll be employing a workgroup solution that delivers unprecedented document and device **management** capabilities.

With more standard features than ever before—plus all the critical capabilities today's workgroup demands—these three multi-function solutions surpass all devices in their class. Any one of them is a smart choice when you want a seamless, comprehensive solution that gives you the level of enterprise control, **flexibility**, and dependability you need to stay competitive.

Advanced Copystar features such as the KX Driver, PRESCRIBE, KM Document Flow and KM-Net Viewer ensure comprehensive job tracking and document control capabilities for Network Administrators while supplying end-users with **powerful tools** to solve any unique application. From simple documents to forms output to complex printing applications, your organization will be able to keep more jobs in-house, reducing outside imaging expenses, and shortening the turnaround time on critical jobs.

Our solutions **partners** also offer products that integrate with the CS-5035, CS-4035, and CS-3035 for specific business applications and requirements. And for your added convenience, our **KM-NET@Service Gateway** automatically reports total meter counts to your servicing location via e-mail.

You have a talented, multi-tasking workgroup that never quits. We have an affordable, multi-function workhorse that shares the same work ethic. The CS-5035, CS-4035, and CS-3035 Document Imaging Solutions from Copystar. Productive, versatile, reliable—and ready to get to work.



### Printing Solutions

- Electronic Forms Printing and Management
- Distributed Printing
- Secure Printing
- Broadcast Printing
- AS/400 Printing
- Citrix MetaFrame Printing
- Linux & Unix Printing
- SAP Printing
- IPDS/AFP Solution
- PDF Direct Printing

### Scanning and Document Delivery

- Document Management
- Document Distribution
- Document Capture, Index, and OCR
- Search and Retrieval
- Enterprise Document Management
- Network Faxing

### Network and Device Management

- Network Management (KM-NET Viewer)
- E-mail Notifications
- Print Cost Accounting
- Automatic Meter Reporting

### Wireless Solutions

- Wireless Printing (802.11b & Bluetooth)
- Wireless Scanning
- Wireless Networking

# CS-5035/4035/3035 Specifications

## BASIC SPECIFICATIONS:

<b>Configuration:</b>	Desktop Digital Copier with Standard 500 x 2 Paper Drawers Plus 200 Sheet Multi-Purpose Tray, Standard Duplex, Optional Network Printing, Scanning and Network Fax
<b>Resolution:</b>	600 x 600 DPI Resolution / 256 Levels, Fast 1200 DPI Print Resolution
<b>Copier Memory:</b>	Standard 64MB RAM; Optional 20GB HDD
<b>Magnification:</b>	Full Size, 5 Reduction, 5 Enlargement Preset Ratios, Plus 25-400% Zoom
<b>Electrical Requirements:</b>	120V, 60Hz, 12A
<b>Dimensions:</b>	23"W x 25"D x 29"H
<b>Weight:</b>	180 lbs
<b>Max. Monthly Volume:</b>	CS-5035 – 150,000 Pages Per Month CS-4035 – 120,000 Pages Per Month CS-3035 – 85,000 Pages Per Month

## OUTPUT SPEEDS:

<b>Warm-Up Time:</b>	Within 25 Seconds, Program During Warmup, Auto Start
<b>First Copy Out:</b>	3.5 Seconds (5035/4035), 3.9 Seconds (3035)
<b>Pages Per Minute:</b>	CS-5035 – 50 Letter, 26 Legal, 26 Ledger CS-4035 – 40 Letter, 23 Legal, 23 Ledger CS-3035 – 30 Letter, 20 Legal, 20 Ledger

## PAPER SUPPLY:

<b>Standard Paper Sources:</b>	Dual 500 Sheet Drawers, 200 Sheet MPT, Auto Selection / Switching, Add Paper While Running
<b>Drawer Paper Size:</b>	5.5" x 8.5" – 11" x 17"
<b>MPT Paper Size:</b>	5.5" x 8.5" – 11" x 17"
<b>Std. / Max. Paper Capacity:</b>	1,200 / 4,200
<b>Paper Weight:</b>	16 – 28 lb Bond via Paper Drawers, 16 lb Bond – 110 lb Index via MPT
<b>Input Materials:</b>	Bond Paper, Recycled Paper, Transparencies, Labels, Envelopes

## DUPLEX UNIT:

<b>Paper Size:</b>	5.5" x 8.5" – 11" x 17"
<b>Paper Weight:</b>	17 – 21 lb Bond
<b>Duplex Modes:</b>	Standard 1:2, 2:2, Book: 2, 2:1

## COPY FUNCTIONS:

<b>Imaging Modes:</b>	Text, Photo, Text / Photo, Auto, Manual, ECO
<b>Continuous Copy:</b>	Up to 999, Auto Reset to 1
<b>Additional Features:</b>	Auto Magnification and Paper Select, Job Build, Job Queue, Batch Copy, Booklet Mode, Book Mode, Combine Image, Covers, Erase Mode, Image Overlay, Image Rotate, Image Reverse, Interrupt, 8 Job Programs, Margin Shift, Mirror Image, Page Numbering, Transparency Mode, Memo Mode, 100 / 1000 Management Codes, XY Zoom, Auto Centering <b>Optional Document Management:</b> Store Documents, File Merge, Forms Composition, Repeat Copy

## PAPER HANDLING OPTIONS:

### DOCUMENT PROCESSOR: SRDF-2

<b>Type:</b>	Reversing Automatic Document Processor
<b>Acceptable Originals:</b>	5.5" x 8.5" – 11" x 17", Mixed Size
<b>Capacity:</b>	100 Sheet RADF / 50 Letter Size Originals Per Minute
<b>Paper Weight:</b>	9 – 42 lb Bond
<b>Dimensions / Weight:</b>	21.8"W x 18.8"D x 5.4"H / 23 lbs

### FINISHER: DF-71

<b>Stack Capacity:</b>	Main Tray: 3,000 Sheets; Sub Tray: 250 Sheets
<b>Paper Size:</b>	Main: 8.5" x 11" – 11" x 17"; Sub: 5.5" x 8.5" – 11" x 17"
<b>Paper Weight:</b>	12 lb Bond – 110 lb Index
<b>Staple Capacity:</b>	50 Sheets: 8.5" x 11"; 30 Sheets: 8.5" x 14", 11" x 17"
<b>Edge Staple Position:</b>	3 Positions: Top Left, Bottom Left, Left / Top Side
<b>Punch:</b>	Standard 2 and 3 Hole
<b>Dimensions / Weight:</b>	27.1"W x 23.5"D x 41.5"H / 110 lbs

### SIMPLE FINISHER: DF-73

<b>Stack Capacity:</b>	Main Tray: 1,000 Sheets
<b>Paper Size:</b>	Main: 8.5" x 11" – 11" x 17"
<b>Paper Weight:</b>	17 lb Bond – 34 lb Bond
<b>Staple Capacity:</b>	30 Sheets: 8.5" x 11"; 20 Sheets: 8.5" x 14", 11" x 17"
<b>Edge Staple Position:</b>	1 Position: Top Left
<b>Dimensions / Weight:</b>	21.9"W x 20.7"D x 36.0"H / 55 lbs

### SADDLE STITCH FINISHER: DF-75

<b>Stack Capacity:</b>	Main Tray: 1,000 Sheets
<b>Paper Size:</b>	Main: 8.5" x 11" – 11" x 17"
<b>Paper Weight:</b>	16 lb Bond – 110 lb Index
<b>Staple Capacity:</b>	50 Sheets: 8.5" x 11"; 25 Sheets: 8.5" x 14", 11" x 17"
<b>Edge Staple Position:</b>	4 Positions: Top Left, Bottom Left, Left Side, Center
<b>Saddle Stitch:</b>	8.5" x 11", 11" x 17"; Up to 10 Sheets
<b>Punch:</b>	Optional 2 and 3 Hole
<b>Dimensions / Weight:</b>	28.3"W x 23.7"D x 39.4"H / 86 lbs

## INTERNAL FINISHER: DF-78

<b>Stack Capacity:</b>	500 Sheets
<b>Paper Size:</b>	8.5" x 11" – 11" x 17"
<b>Paper Weight:</b>	16 lb – 28 lb Bond
<b>Staple Capacity:</b>	30 Sheets: 8.5" x 11"; 20 Sheets: 8.5" x 14", 11" x 17"
<b>Edge Staple Position:</b>	1 Position
<b>Dimensions / Weight:</b>	12.2"W x 16.0"D x 6.3"H / 19.8 lbs

## MULTI-BIN MAILBOX: M-2107

<b>Number of Trays:</b>	7
<b>Tray Capacity:</b>	100 Sheets: 5.5" x 8.5" – 8.5" x 11"; 50 Sheets: 8.5" x 14" – 11" x 17"
<b>Paper Weight:</b>	17 – 21 lb Bond
<b>Dimensions / Weight:</b>	20.0"W x 15.7"D x 18.5"H / 22 lbs

## PUNCH UNIT: PH-2

<b>Paper Size:</b>	8.5" x 11" – 11" x 17"
<b>Paper Weight:</b>	17 lb Bond – 110 lb Index
<b>Number of Holes:</b>	2 and 3
<b>Weight:</b>	5.2 lbs

## LARGE CAPACITY TRAY: PF-75

<b>Paper Capacity:</b>	3,000 Sheets
<b>Paper Weight:</b>	16 – 28 lb Bond
<b>Paper Size:</b>	8.5" x 11"
<b>Dimensions / Weight:</b>	23.2"W x 12.4"D x 23"H / 48 lbs

## DUAL PAPER DRAWERS: PF-70

<b>Paper Capacity:</b>	2 x 500 Sheets
<b>Paper Weight:</b>	16 – 28 lb Bond
<b>Paper Size:</b>	5.5" x 8.5" – 11" x 17"
<b>Dimensions / Weight:</b>	23.2"W x 12.4"D x 23"H / 57.4 lbs

## CONNECTIVITY OPTIONS:

### PRINT / SCAN: PRINT / SYSTEM (U)

<b>PRINT:</b>	
<b>Controller:</b>	Embedded PowerPC750 / 500 MHz Controller
<b>Printer Memory:</b>	Standard 64MB, Upgradeable to 576MB via 100 Pin DIMMS, Optional Printer HDD, Standard CF Card Slot (Type 1)
<b>Supported PDL / Emulations:</b>	PRESCRIBE, PCL6 (PCL XL, PCL 5e), KPDL3 (PS3), KCGL (HP-GL/2), Diablo 630, IBM ProPrinter X24, Epson LQ850, Line Printer
<b>Fonts:</b>	80 Outline Fonts for PCL XL/5e, 136 Outline Fonts for KPDL3, 1 Bitmap Font
<b>Windows™ OS Compatibility:</b>	Windows™ 95/98/Me/NT4.x/2000/XP
<b>Novell™ OS Compatibility:</b>	Novell NetWare™ 3.x/4.x/5.x
<b>Mac OS Compatibility:</b>	OS 8.x/9.x/10.x
<b>UNIX OS Compatibility:</b>	Sun OS 4.1.x; Solaris 2.x; AIX, HP-UX (LPR)
<b>Connectivity / Interface:</b>	Standard 10/100BaseTX, Parallel IEEE1284, High Speed USB 2.0
<b>KUIO LV Expansion Slots (2):</b>	Optional Printer Hard Disk Drive Optional IB-22 Enhanced Wireless NIC; IB-20 10/100BaseTX, 10Base2; IB-11 Serial Interface
<b>Supported Protocols:</b>	TCP/IP, IPX/SPX, AppleTalk, NetBEUI
<b>Driver:</b>	KX Driver for Windows™, PPD for Mac, PPD for Linux/UNIX
<b>Utilities:</b>	KM-NET Viewer, KM-NET Remote Operation Panel, PDF Direct Print, KM-NET Job Manager, KM-NET Printer Disk Manager, Network Advanced Setup Utilities, PRESCRIBE Utilities

## SCAN:

<b>Resolution:</b>	200, 300, 400, 600 DPI
<b>Scan Speed:</b>	50 Originals Per Minute (All Models)
<b>File Formats:</b>	PDF, TIFF
<b>Connectivity:</b>	Standard NS-30 10/100BaseTX
<b>Supported Protocols:</b>	TCP/IP
<b>Scanning Features:</b>	KM Document Flow System - Document Management System, Scan to PC/File, Scan to Mac, Scan to E-mail, TWAIN
<b>Driver:</b>	TWAIN Driver
<b>Utilities:</b>	KM DB-Assistant, KM Scanner File Utility, Scan to Mac Utility, KM Scanner Address Book, Address Book Editor, LDAP Converter Utility, Network Advanced Setup Utilities

## PRINTER HARD DISK DRIVE:

Enables Document Printing and e-MPS Functions: Private Print, Job Storage, Quick Copy, Proof & Hold, Virtual MailBoxes

## FAX / NETWORK FAX: FAX SYSTEM (J)

<b>Compatibility:</b>	Super G3
<b>Transmission Speed:</b>	Approximately 3 Seconds Per Page
<b>Modem Speed:</b>	33.6 Kbps with Auto Fallback
<b>Data Compression:</b>	JBIG, MMR, MR, MH
<b>Fax Memory:</b>	Std 8MB / Max 16MB
<b>Driver:</b>	KM Network Fax Driver
<b>Utilities:</b>	Address Book for NW Fax
<b>Additional Features:</b>	Duplex TX/RX, Confidential RX/TX, Polling, Broadcasting, 2 in 1 RX

## COPIER HARD DISK DRIVE: HD-70

Enables Advanced Copier Document Management; Synergy Box, Shared Data, Forms Gallery; Store up to 70,000 Pages, Repeat Copy, 1,000 Management Codes

## ADDITIONAL OPTIONS:

Copier HDD (HD-70), Job Separator (J-1402), 8MB Fax Memory Board (FM1-8MB), Stand



Specifications and design are subject to change without notice.

For the latest on connectivity visit [www.copystar.com](http://www.copystar.com).

All trademarks and registered trademarks are the property of their respective manufacturers.

Kyocera Mita America, Inc. Headquarters: 225 Sand Road, PO Box 40008, Fairfield, NJ 07004-0008, USA

©2003 Kyocera Mita America, Inc.

Item Code# 87164177



[www.copystar.com](http://www.copystar.com)