

Panafax®  
UF-6000

# dependable

Plain Paper Laser Fax



Panasonic **ideas for life**



UF-6000

# Versatile Paper Document Processing Fax, Scan, Print and Email with one compact Unit

Versatility is the essence of the new Panafax UF-6000. More than just a rugged top-performance fax machine that can go head-to-head with high-end faxes, the UF-6000 is a full-fledged document management system whose real power emerges when it is hooked up to a PC. When connected, you can use the UF-6000 as a convenient image scanner that converts any paper document into PC data that can be stored on your computer and distributed via email. And with its environment-friendly design, the UF-6000 is a dependable, cost-effective choice.

The Panafax UF-6000...The one-stop solution for all your paper document management needs.

# Business-Optimized Fax Capabilities

## High-speed Scanning

Built for true business-level faxing, the Panafax UF-6000 scans documents quickly at a rate of 2.8 seconds per page and its 50-sheet automatic document feeder makes it possible for you to fax a multi-page document at the touch of a button.

## 480 Pages Large Document Memory\*1

With its high-capacity 8 MB document memory, the UF-6000 can store up to 480 pages\*1. This allows it to easily handle several high-volume jobs at once, so you'll never have to wait around.

\*1 Based on ITU-T Image No.1 scanned in Standard mode.

## Super-Fast Fax Transmission

With Quick Memory Transmission, the UF-6000 dials as soon as the first page has been scanned – even when sending a large, multi-page document.

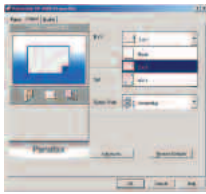


# Multi-Function Capabilities

## Print It from a PC

### – 600 dpi Laser Printer

With the UF-6000, convenient PC-linked features are available right away via a built-in parallel interface and the provided PC software. Just install the printer driver on your computer and you can use the UF-6000 as a high-quality 600 x 600 dpi laser printer\*2.



## Scan It to PC

### – TWAIN Image Scanner

The UF-6000 can also function as a TWAIN-compatible 400 dpi image scanner, allowing you to easily convert paper documents into PC data. Using the provided Document Manager software\*2, scanned documents can be efficiently managed, edited and even shared by network PCs.

## Even Email It – Panasonic's Document Manager Software & PC-Fax

Panasonic's Document Manager software makes it easy to send documents via email – just attach them directly to email messages with simple “drag & drop” operation. And, with the provided Panafax Desktop software\*2, you can send a fax directly from your PC via the UF-6000 without having to print it out.

\*2 Compatible with Windows® Server 2003, Windows XP, Windows 2000, Windows 98, Windows Me and Windows NT® 4.0 operating system.

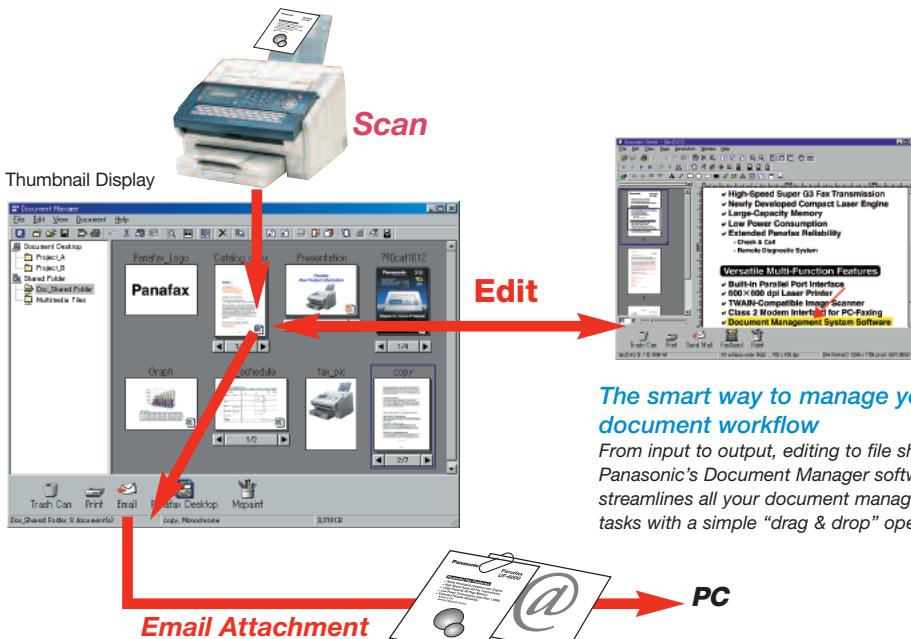
# Energy Savings & Reliability

## Low Power Consumption

Thanks to our Energy Saver technology, the UF-6000's power consumption is reduced to a mere 1.2 Wh in the sleep mode.

## Extended Reliability

With Check & Call, the UF-6000 automatically reports low toner status and certain mechanical problems to a service center, while the Remote Diagnostic System enables our expert technicians to quickly locate any problems via a telephone line and provide you with a solution.



**The smart way to manage your document workflow**  
From input to output, editing to file sharing, Panasonic's Document Manager software streamlines all your document management tasks with a simple “drag & drop” operation.

## And More...

- **Multi-Tasking Capability**  
You can transmit a fax from memory and print out a PC document at the same time.
- **132-Station Autodialer**  
Panasonic's software allows you to easily edit telephone numbers and ID names for time-saving autodialing.
- **64-Level Halftone**
- **Panasonic Super Smoothing**
- **250-Sheet Paper Capacity Expandable to 500 Sheets**
- **Verification Stamp**

## Features

- Autodialer One-touch: up to 32 stations  
Abbreviated: up to 100 stations  
Maximum digits for telephone number: 36 digits
  - Program keys (up to 4 Programs)
  - Multi-Tasking Operation
  - Directory Search Dialing
  - Directory Sheet Print
  - Intelligent Redial
  - Chain Dialing
  - Distinctive Ring Detector (DRD)
  - Quick Memory Transmission
  - Multi-station Transmission (up to 144 stations)
  - Automatic Memory Re-transmission
  - Deferred Transmission
  - Deferred Multi-station Transmission
  - Priority Direct Transmission
  - Edit File Mode with View Mode
  - Automatic Cover Sheet
  - Receive to Memory
  - Substitute Reception
  - Selective Reception
  - Number of memory job files (Max. 10 files)
  - Fax Forward
  - Polling / Multi-station Polling (up to 144 stations)
  - Deferred Polling/Deferred Multi-Station Polling
  - Memory Polling Transmission (1 file)
  - Confidential Mailbox\*<sup>1</sup> (10 mailboxes)
  - Password Transmission/Reception\*<sup>1</sup>
  - ITU-T Sub-address Transmission
  - Panasonic Super Smoothing (Fax/Copy)
  - 64-Level Halftone
  - Automatic/Fixed Reduction
  - Overlapping Print
  - Collation Stack
  - Verification Stamp
  - Communication Journal with image data
  - Header/Total Page Print
  - Transaction Journal with view mode
  - Fax Access Code (Fax Lock)
  - PIN Code Access
  - Fax/Tel Auto Switch
  - External TAM Interface
  - Remote Reception
  - Multi-Purpose LCD Display (20 x 2 lines)
  - Multiple Copy with Sorting (up to 99 copies)
  - Reduction Copy
  - Energy Saver
  - Remote Diagnostics
  - Check & Call Function
- 
- Printer Interface
  - Scanner Interface
  - PC-Fax software ("Panafax Desktop")
  - Document Manager
  - Document Viewer with Annotation Function
  - Phone Book Editor
  - Configuration Editor
  - Status Monitor

## Options

- 250-sheet Universal Paper Feed Unit (UE-409070)
- Handset Kit (UE-403176)

## Consumable

- All-In-One Print Cartridge (toner/developer/drum)  
(UG-5510) 9,000-page Toner\*<sup>10</sup>

## UF-6000 Specifications

Compatibility	ITU-T Group 3, ECM
Modem Speed	33,600 - 2,400 bps with automatic fallback
Coding Scheme	MH/MR/MMR
Transmission Speed* <sup>2</sup>	Approx. 3 sec.
Document Size	Max. 10.1" x 78.7" (257 mm x 2000 mm) (with operator's assistance)
	Min. 5.8" x 5.0" (148 mm x 128 mm)
Effective Scanning Width	8.3" (212 mm)
Automatic Document Feeder Capacity* <sup>3</sup>	50 sheets
Document Thickness	Single sheet: 0.0024" - 0.0060" (0.06 - 0.15 mm)
	Multi-sheet: 0.0024" - 0.0039" (0.06 - 0.10 mm)
Scanning Resolution (Fax)	Standard: 203 dots/inch x 98 lines/inch (8 dots/mm x 3.85 lines/mm)
	Fine: 203 dots/inch x 196 lines/inch (8 dots/mm x 7.7 lines/mm)
	Super Fine: 203 dots/inch x 391 lines/inch (8 dots/mm x 15.4 lines/mm)
	406 dots/inch x 391 lines/inch* <sup>4</sup> (16 dots/mm x 15.4 lines/mm)
Scanning Speed* <sup>5</sup>	Approx. 2.8 sec. (Letter, Standard mode)
Recording Method	Laser printing on plain paper
Printing Speed* <sup>6,7</sup>	6.5 ppm
Recording Paper Size	Letter / Legal / A4, cut-sheet on plain paper
Effective Recording Width	8.2" (208 mm) (Letter)
Recording Paper Capacity	250 sheets (20 lb., 75 g/m <sup>2</sup> ) With optional cassette: Approx. 500 sheets max. total
Recording Resolution	Fax / Copy 406 dpi x 391 dpi
	Printer 600 dpi x 600 dpi
Image Memory Capacity* <sup>8</sup>	8 MB (Approx. 480 pages)
Printer / Scanner Interface	Bi-directional Parallel (IEEE1284)
Scanner Driver	TWAIN
Scanning Resolution (PC)* <sup>4</sup>	400 dots/inch x 400 dots/inch
Power Requirements	AC 120 V, 60 Hz
Power Consumption	Max. Approx. 470 W
	Sleep mode: 1.2 Wh
Dimensions (W x D x H)* <sup>9</sup>	14.6" x 18.7" x 9.8" (370 mm x 474 mm x 250 mm)
Weight* <sup>9</sup>	20 lb. (9.0 kg) (Excluding consumable supplies and optional equipment)

\*<sup>1</sup> Panafax proprietary features work only with selected Panafax machines.

\*<sup>2</sup> Transmission time applies to memory transmission of text data using only ITU-T Image No. 1 between the same models at maximum modem speed. Transmission time may vary in actual usage. Usually public telephone lines can only support communications speeds of 28.8 Kbps or lower. Via PBX, transmission speed may fall back to a lower speed.

\*<sup>3</sup> Operating environment 20°C 50% Relative Humidity. Set the documents as stairs shape.

\*<sup>4</sup> Interpolated resolution (Optical Resolution: 203 dots/inch x 391 lines/inch)

\*<sup>5</sup> Scanning speed applies to the feeding process from the top to the end of a single page test chart. The time for the feeding process does not include the time that it takes for the top edge of the page to reach the scanning point and page ejection. Time for entire storing process is not applied.

\*<sup>6</sup> Speeds are contingent upon applications, machine configuration, and status. Individual speeds may vary.

\*<sup>7</sup> In multiple copy mode excluding the first copy.

\*<sup>8</sup> Based on ITU-T Image No. 1 scanned in Standard mode.

\*<sup>9</sup> Dimensions and weight are approximate.

\*<sup>10</sup> Based on ITU-T Image No.1 scanned in multiple copy mode, set on fine resolution and using letter size recording paper. Yield may vary according to operating conditions and environment where the machine is installed.

Microsoft®, Windows® and Windows NT® are registered trademarks of Microsoft Corporation.  
All other brand or product names are the property of their respective holders.

Design and specifications are subject to change without notice.

## Dimensions



As an ENERGY STAR® Partner, Panasonic has determined that this product meets the ENERGY STAR® guidelines for energy efficiency.

## ISO 9001 Quality Management System

Our business processes which produce document, information and network products, from manufacturing to marketing, conform to ISO 9001 Quality Management Systems standard. Design, development, manufacture, installation, repair and maintenance of document, information and network products, their associated devices and consumables. In addition, the plants outside Japan have acquired ISO 9001 certification.



# Panasonic®

Panasonic Digital Document Company  
Unit of Panasonic Corporation of North America  
Two Panasonic Way, Secaucus, NJ 07094  
For a local dealer, please call 1-800-742-8086  
panasonic.com/office