

Panafax®  
UF-8000



# superior

Plain Paper Laser Fax



Panasonic **ideas for life**



When it comes to office equipment, nothing is more important than consistent, reliable performance. Just because a task is simple doesn't mean that it is always easy to do. Automatic document feeding is one of the most essential features of a fax machine, and when it doesn't work the way you want it to, it can lead to a lot of frustration.

That's where the UF-8000 comes in. From a one-page fax, up to large, multi-page transmissions, the UF-8000 is designed to handle all of your business needs. Supported by a fast 0.7-second Quick Scan, the UF-8000's large capacity 100-page Auto Document Feeder easily manages large or small jobs. It also improves your document handling by minimizing the risk of double-feeding, pickup failures and skewing.

The UF-8000's versatile one-touch Auto-Dialer and QWERTY keyboard allows users to quickly program in and search for stored numbers and email addresses. You can even program the Auto-Dialer by using the standard Address Book Editor Software, which allows you to import a list from a PC file. Now, with 80 one-touch stations at your fingertips, faxing your documents is as easy as a push of a button!

Best of all, the UF-8000 is built to last and designed to grow along with you as your business needs expand. Upgrades such as Network Scanning, Scan-to-Email/PC and LAN PC Faxing, ensure that the UF-8000 is the superior choice for your business needs today and tomorrow.



**Panafax®**  
UF-8000

**Built to Last.**  
**Designed to Grow.**





# more powerful, more reliable,

---

## Easy and Reliable Fax

---

### Maximum 1000-Station Auto-Dialer

For quick dialing, you can store up to 280 phone numbers/email addresses\* from the QWERTY keyboard or program the Auto-Dialer by importing a list from a PC file\*\* using the standard Address Book Editor Software on your PC. Auto-Dialer capacity can be expanded to a maximum of 1,000 stations with an optional SD memory card.

### Quick Name Search

Quick Name Search maximizes the Auto-Dialer's large memory capacity by providing quick and easy access to stored names and numbers. Simply key in the first letter of the recipient's name on the QWERTY keyboard and press it repeatedly to scroll through the listings that appear on the display. When you find the name you're looking for, just select it. It's that simple!

### Directory Search

Directory Search allows you to enter multiple letters via the QWERTY keypad to narrow down the search and quickly find the name you're looking for in a large database such as a Lightweight Directory Access Protocol (LDAP) server or the optional 1,000-station Auto-Dialer. The UF-8000 retrieves both fax phone numbers and email addresses\* from the LDAP server's directory. The LDAP directory also allows users to easily program the fax phone numbers/email addresses\* into the Auto-Dialer.



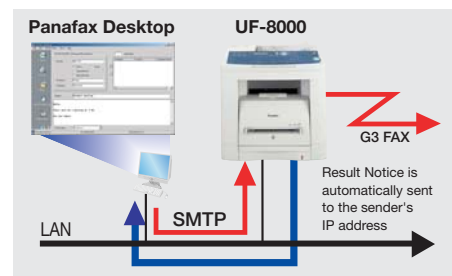
### Dual-Line Fax Communication Productivity

With the optional G3 fax communication port installed, the UF-8000 can handle the same communication volume as two separate fax machines. Each communication port works independently so that each line can be configured for send only, receive only or both according to your needs.



### Panafax® Desktop Software\*

The Panafax® desktop software works on a networked PC to send a fax directly from your Windows® application software without having to print it on paper before transmitting.



### Duplex Scanning/Printing Capability

Faxing double-sided documents is easily accomplished by simply scanning the first side through the ADF, and then scanning the other. The UF-8000 will automatically transmit the scanned pages in the original page order. The UF-8000 can also print a received multi-page fax on both sides of the paper by utilizing the built-in automatic duplex unit.

---

## Versatile Printing/Scanning Features

---

### Built-in Network Printing Capability

The UF-8000 comes standard with a built-in Ethernet LAN interface, and can be automatically set up as a high speed 19 ppm network printer when plugged into the network using the Dynamic Host Configuration Protocol (DHCP) client feature. The unit's standard USB 1.1 interface provides a direct connection to a local PC.

### High Resolution of 1200-equivalent x 600 dpi

In addition to standard 600 x 600 printing resolution, you can increase the print resolution up to 1200 dpi-equivalent x 600 dpi by adding the optional PCL printer controller. This produces crisp, clean prints with superior legibility and halftone gradations.



# more versatile

## Standard Duplex and 2-in-1 / 4-in-1 Printing

The UF-8000 standard automatic duplex printing capabilities allows users to print on both sides of the paper. For added cost savings, double-sided printing can also be used with the 2-in-1 / 4-in-1 printing. This feature can greatly reduce your paper expenses and save on filing space.

## Mailbox Print/Secure Mailbox Print\*\*\*

Mailbox Print ensures that your printouts don't get mixed up with someone else's by storing your printouts in a specified mailbox. Secure Mailbox Print executes the Mailbox Print jobs only when the correct user password is entered.

## Easy Print Driver Installation, User-Friendly Graphical Interface, and Status Monitoring



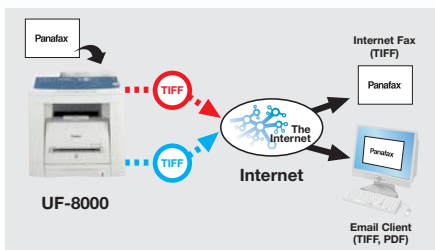
Printer Driver



Network Status Monitor

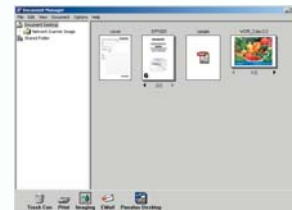
## Internet Fax and Scan-to-Email/PC/FTP Server

With the optional Internet Fax/Email/Network Scanner Module, the UF-8000 can send documents to an ITU-T T.37 Internet Fax machine<sup>®</sup>, an Email Address, a networked PC or a FTP Server as a PDF or TIFF file.



## Manage Your Document Workflow with Panasonic's Document Management System Software

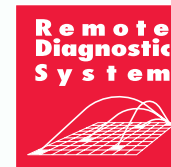
With Panasonic's Document Management System (DMS) software, users have the ability to edit and share scanned documents. DMS software's simple "drag and drop" functionality allows user to manage and edit documents right from their desktop PC. Scanned files can be saved in a format such as TIFF and PDF for easier document distribution. Users can easily add annotations (including text, graphic and memos) to imported data. Documents created in Microsoft<sup>®</sup> Word or Excel can be imported as image files and managed in the same manner.



## Extended Reliability

### Maintenance Support

The Check & Call function automatically reports low toner status and certain mechanical problems to a service center while the Remote Diagnostic System enables expert technicians to quickly troubleshoot and provide solutions via a telephone line or the Internet.



\* Internet Fax/Email/Network Scanner Module is required.  
 \*\* CSV/Comma-Delimited text file  
 \*\*\* Optional SD Memory Card is required.

## Features

- Auto Dialer
  - Quick Name Search: up to 280 stations (up to 1000 stations with optional SD memory card)
  - One-touch: up to 80 stations
  - Abbreviated: up to 200 stations
  - Digit of Telephone number (up to 36 digits)
- Auto Dial Prefix Insertion
- Program Keys (up to 80 programs)
- Multi-Tasking Operation
- Directory Search Dialing
- Directory Sheet Print
- Intelligent Redial
- Chain Dialing
- Quick Memory Transmission
- Multi-station Transmission (up to 330 stations)
- Deferred Transmission
- Deferred Multi-station Transmission
- Duplex Transmission
- Receive to Memory
- Substitute Reception
- Number of memory job files (Max. 50 files)
- Fax Forward
- Polling /Multi-station Polling
- Deferred Polling / Deferred Multi-station Polling
- Memory Polling Transmission (1 file)
- ITU-T Sub-address Transmission
- 256-Level Halftone

- Automatic/Fixed Reduction
- Collation Stack
- Verification Stamp
- Communication Journal with image data
- Header/Total Page Print
- Transmission Journal with view mode
- Fax Access Code (Fax Lock)
- PIN Code Access
- Multiple Copy with Sorting (up to 99)
- Duplex Copy
- Zoom/Reduction Copy
- Sort Copy
- Bypass Copy
- Energy Saver
- Remote Diagnostic
- Check & Call Function
- LAN PC Fax software (Panafax® Desktop)
- Document Manager
- Document Viewer with Annotation
- Network Address Book Editor
- Network Configuration Editor
- Network Status Monitor
- Dynamic Host Configuration Protocol (DHCP) client ready
- Lightweight Directory Access Protocol (LDAP) compatible
- Simple Mail Transfer Protocol (SMTP) Authentication

## Options

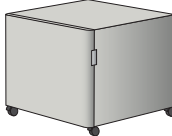
### Memory

#### SD Memory Card (Maximum 512MB)

\*Contact your local dealer



**Handset Kit**  
UE-403171



**Stand**  
DA1D190



**550-sheet  
2nd Paper Feed Module**  
DA-DS188

**Accounting Software** DA-WA10  
\*Requires additional SD memory

**Expansion Board** DA-EM600F

**Printer Controller Module**  
UE-404091

**Internet Fax/Email/  
Network Scanner Module**  
UE-404090

**G3 Communication  
Port Kit (2nd G3 Fax)**  
UE-407026

### Consumables



**Toner cartridge**  
UG-5530

## UF-8000 Specifications

### General Specifications

Type	Desktop
Power Requirement	AC 120V, 50/60 Hz
Power Consumption	Max: Approximately 1000 W Power saver mode: 12 W Sleep mode: 7 W
Dimensions (W x D x H)*1	17.7" x 16.5" x 17.6" (450 x 418 x 448 mm) (Excluding optional equipment)
Weight*1	Approx. 48.5 lb (Approx. 22 kg) (Excluding optional equipment)

### Fax Specifications

Compatibility	ITU-T Group 3, ECM
Modem Speed	33.6 kbps - 2.4 kbps with automatic fallback
Coding Scheme	MH/MR/MMR/JBIG
Transmission Speed*2	Approximately 2.7 seconds / page (Letter)
Number of Memory Job Files	50
Document Size	Max: 8.5" x 78.7" (216 mm x 2000 mm <sup>3</sup> ) with operator's assistance Min: 5.5" x 5.5" (140 mm x 140 mm)
Effective Scanning Width	8.34" (212mm)
Automatic Document Feeder	100 pages (20 lb, 75 g/m <sup>2</sup> )
Scanning Speed*4	Approximately 0.7 seconds/page (Letter, 203 dpi x 98 lpi)
Scanning Resolution	Standard: 203 dots/inch x 98 lines/inch (8 dots/mm x 3.85 lines/mm) Fine: 203 dots/inch x 196 lines/inch (8 dots/mm x 7.7 lines/mm) Super Fine: 406 dots/inch x 391 lines/inch (16 dots/mm x 15.4 lines/mm) 600 dpi: 600 dots/inch x 600 dots/inch
Recording Method	Monochrome laser printing on plain paper
Recording Paper Size	Letter/Legal
Effective Recording Width	8.15" (207mm)
Paper Feed	Standard Tray: 250 sheets paper tray unit x 1 + 1-sheet bypass Maximum 800 sheets with option
Image Memory Capacity*5	Standard: 12MB (720 pages) Maximum: 512MB (12,750 pages)
Number of Auto Dialers	Standard: 280 Max: 1,000 with optional SD Memory Card (32MB to 512MB)

### Printer Specifications

Network Printer Interface	Ethernet 10Base-T/100Base-TX
Local Printer Interface	USB 1.1
Printing Speed*6	Up to 19 ppm
Paper Size	Letter/Legal/Invoice <sup>7</sup> /Envelope (#9, #10) <sup>7</sup>
Printing Resolution	1200 dpi equivalent <sup>8</sup> x 600 dpi
Printer Memory	32MB
Printer Language	Standard: Panasonic Printing System for Windows® (GDI) Option: PCL 5e Emulation, PCL 6 Emulation
Compatible Operating System	Windows® XP/2000/Server 2003/98/Me, Windows NT® 4.0

### Network Scanner Specifications

Network Scanner Interface	Ethernet 10Base-T/100Base-TX
Scanning Resolution	600 x 600 dpi, 300 x 300 dpi, 150 x 150 dpi
Scanning Speed*4	Approximately 1.1 seconds (Letter, 150 x 150 dpi)
Data Format	TIFF, PDF

### Scan-to-Email / Internet Fax Specifications

Compatibility	IETF RFC 2305, ITU-T T.37
Communication Protocol	TCP/IP, SMTP, POP3, MIME, DHCP LDAP, SNMP/MIB
Network Connectivity	Ethernet 10Base-T/100Base-TX (IEEE802.3)
Data Format*9	TIFF-FX (Profile S/F/J), PDF

### Notes

- \*1 Dimensions and weight are approximate.
- \*2 Transmission time applies to memory transmission of text data using only ITU-T Image No.1 between the same models at maximum modem speed. Transmission time may vary in actual usage. Usually public telephone lines can only support communication speeds of 28.8 Kbps or lower. Via PBX, transmission speed may fall back to a lower speed.
- \*3 Standard/Fine mode
- \*4 Scanning speed applies to the feeding process from the top to the end of a single page test chart. The time for the feeding process does not include the time that it takes for the top edge of the page to reach the scanning point and page ejection. Time for entire storing process is not applied.
- \*5 Based on ITU-T Image No.1 scanned in Standard mode.
- \*6 Speeds are contingent upon applications, machine configuration, and status. Individual speeds may vary.
- \*7 Bypass only
- \*8 With optional Printer Controller Module
- \*9 Internet Fax only supports TIFF-FX format.

Design and specifications are subject to change without notice. Not all options may be available at the time of notification.

Microsoft® Windows® and Windows NT® are registered trademarks of Microsoft Corporation.  
PCL is a registered trademark of Hewlett-Packard Company and/or its subsidiaries.  
All other brand or product names are the property of their respective holders.

### Dimensions



# Panasonic®

Panasonic Digital Document Company  
Unit of Matsushita Electric Corporation of America  
Two Panasonic Way, Secaucus, NJ 07094  
For a local dealer, please call 1-800-742-8086  
panasonic.com/panafax



As an Energy Star® partner, Panasonic has determined that this product meets the Energy Star® guidelines for energy efficiency.

### ISO 9001 Quality Management System

Our business processes which produce document, information and network products, from manufacturing to marketing, conform to ISO9001 Quality Management Systems standard. Design, development, manufacture, installation, repair and maintenance of document, information and network products, their associated devices and consumables in addition, the plants outside Japan have acquired ISO 9001 certification.



001